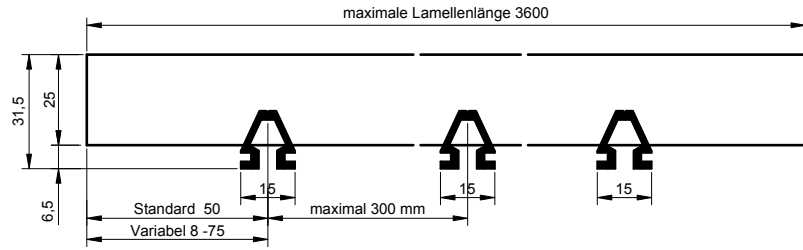
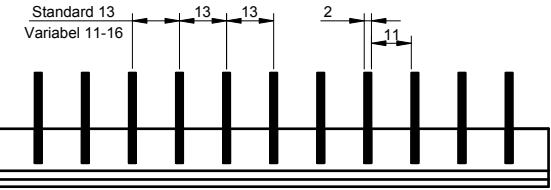


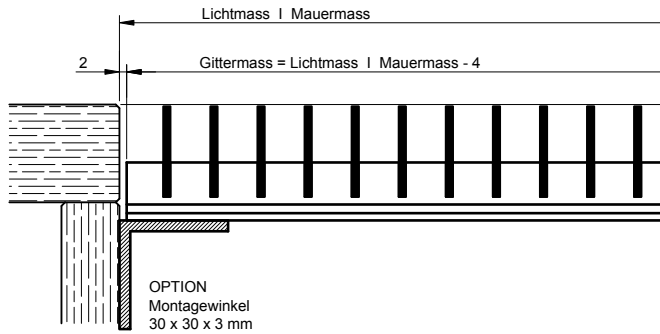
alfitec KB32 Lamellenhalter standard



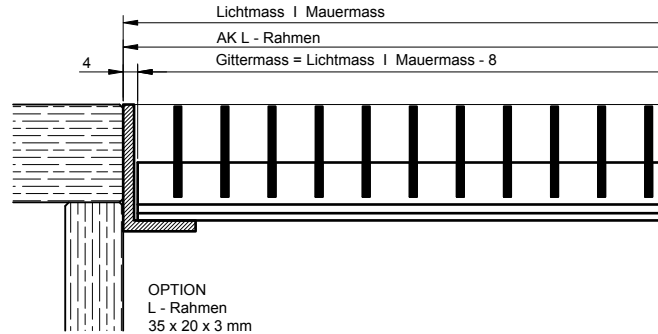
maximale Höhe ohne Verstärkung 555



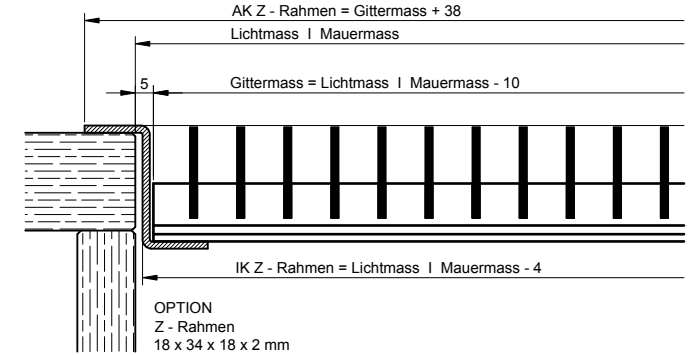
Rahmenlos



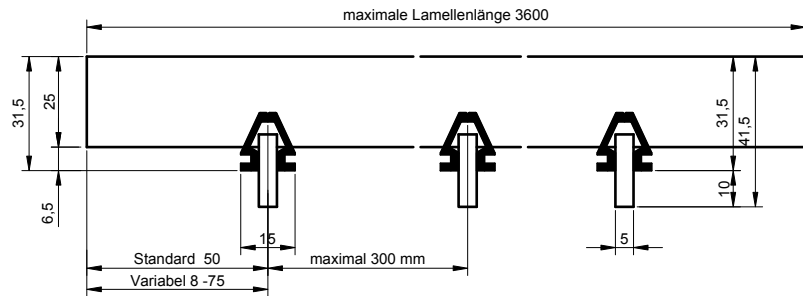
L - Rahmen



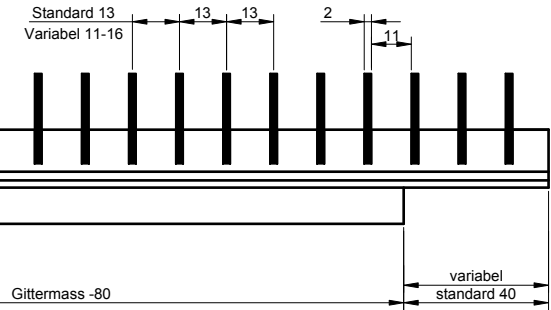
Z - Rahmen



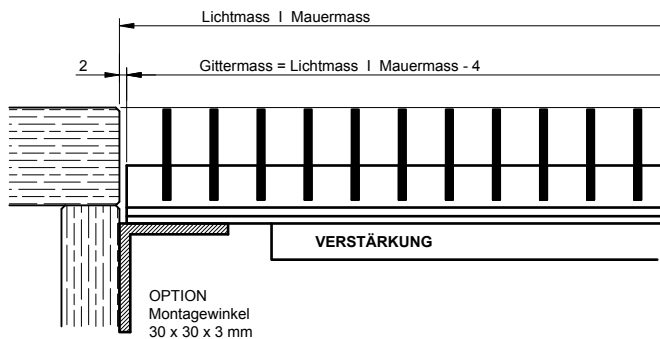
alfitec KB32 Lamellenhalter mit Verstärkung



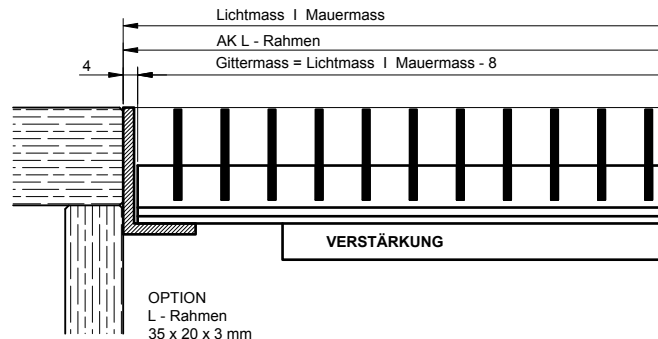
maximale Höhe mit Verstärkung ca. 2220



Rahmenlos



L - Rahmen



Z - Rahmen

